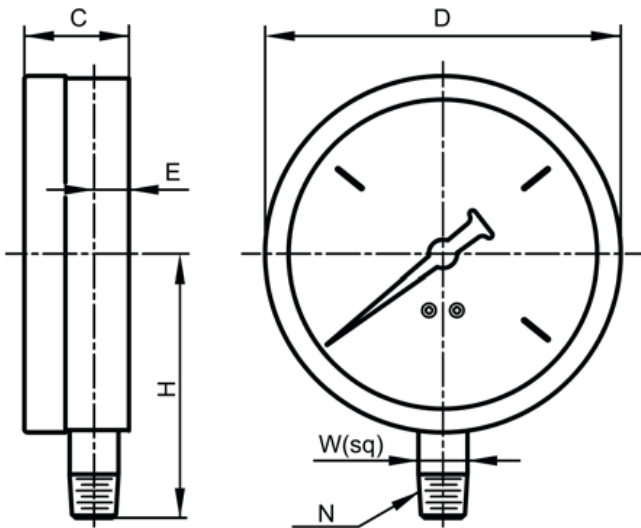


PRESSURE GAUGE

- Suitable for Fire sprinkler systems
- Design: EN 837-1 & ASME B40.100
- Ranges: 0/300 psi (20bar), water or air
- Ambient temperature: -40 ~ +60°C
- Maximum medium temperature: +60°C
- UL Listed



Product Specifications

Size	4"(100mm)
Accuracy	ASME B40.100 Grade B ($\pm 3/2/3\%$ of span)
Case	Black epoxy coated
Dial	White aluminum with stop pin; black and red lettering
Pointer	Black aluminum
Window	Tempered glass
Bourdon tube	C- shape; bronze
Movement	Brass
Socket	Brass
Connection	NPT1/4" or BSPT/BSPP1/4" lower mount
Liquid filling	No

DIMENSIONS

D	C	H	E	W	N
102	30	75	10	14	NPT1/4" BSPT1/4" BSPP1/4"